

mplexport.com

**NEXT TO
NATURE**

WATERPROOF
BODY

WALL TILES
300X450MM



mplexport.com

Matt Collection

An interior that reflects
the amazing finish
which compliments
the design aspects.



HD



An
m

touch of *Uniqueness*



Long
Durability



Easy to
Clean



Impact
Resistance



Frost
Resistance



Low Water
Absorption



Dimensional
Stability



HD



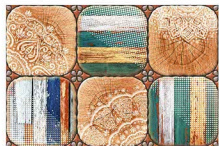
ranam

mlexport.com

Design in Display : 13001



13001 - LT



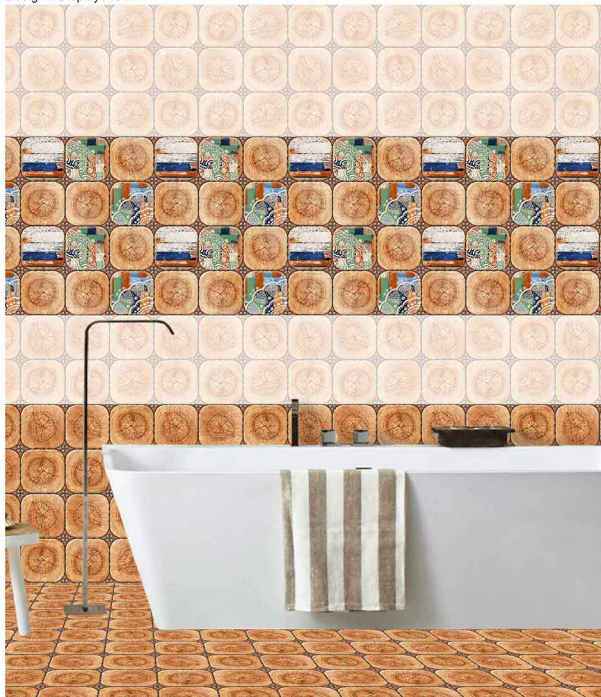
13001 - HL - 1



13001 - HL - 2



13001 - DK





HD



ran
nem

mlexport.com

Design in Display : 13002



13002 - HL - 1



13002 - DK



13002 - LT



HD



fan
lam

mlexport.com

Design in Display : 13003



13003 - HL - 1A



13003 - HL - 1B



13003 - DK



13003 - LT





13004 - LT



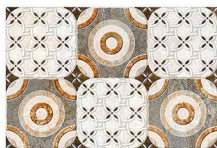
13005 - LT



13006 - HL - 2



13007 - LT



13004 - HL - 1



13005 - HL - 1



13006 - HL - 1



13007 - HL - 1



13004 - DK



13005 - DK



13006 - LT



13007 - DK



HD



ran
lam

mlexport.com

Design in Display : 13008



13008 - LT



13008 - HL - 1



13008 - HL - 2



13008 - DK



HD



ran
am

mlexport.com

Design in Display : 13001



13009 - LT



13009 - HL - 1

Random



13009 - HL - 1

Random



13009 - LT





13010 - HL - 2



13010 - LT

Random



13010 - HL - 1



13010 - LT

Random



13010 - LT

Random



13010 - HL - 3



13011 - DK

Random



13012 - DK

Random



13011 - HL - 1



13011 - HL - 1



13011 - DK

Random



13011 - DK

Random



HD



ranam

mlexport.com

Design in Display : 13014



13013 - LT

Random



13014 - LT

Random



13013 - HL - 1



13014 - HL - 1



13013 - DK

Random



13014 - DK

Random



HD



ran
lam

mlexport.com

Design in Display : 13016



13015 - LT



13016 - LT



13015 - HL - 1



13016 - HL - 1



13015 - DK



13016 - DK

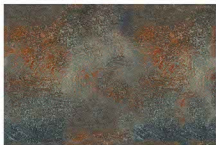




13017 - HL - 1A



13017 - HL - 1B



13017 - DK



13017 - LT



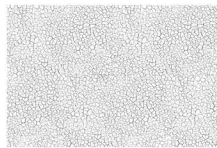
13018 - LT



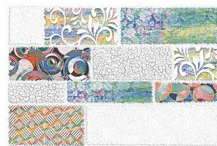
13018 - HL - 1



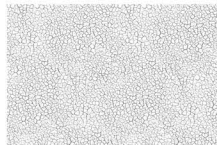
13018 - DK



13019 - LT



13019 - HL - 1



13019 - LT



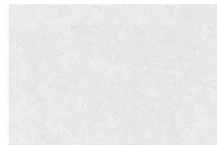
HD



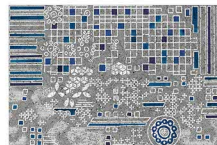
fan
m

mlexport.com

Design in Display : 13020



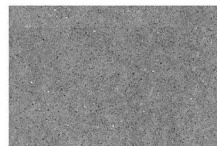
13020 - LT



13020 - HL - 1



13020 - HL - 2



13020 - DK

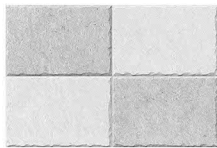


HD

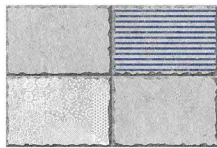


ran
am

mlexport.com

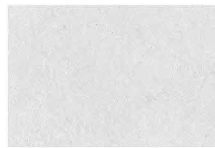


13021 - HL - 2



13021 - HL - 5

Random



13021 - LT



13022 - LT



13021 - HL - 1



13021 - HL - 4



13021 - HL - 6



13022 - HL - 1

Random



13021 - DK



13021 - HL - 3



13021 - DK



13022 - DK



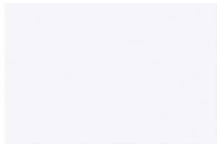
HD



ran
lam

mplexport.com

Design in Display : 13023



13023 - LT



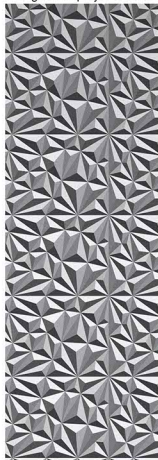
13023 - HL - 1



13023 - HL - 2



13023 - DK





HD



ran lam

mlexport.com



13024 - HL - 2



13024 - HL - 1



13024 - DK



13024 - LT



13025 - LT



13025 - HL - 1

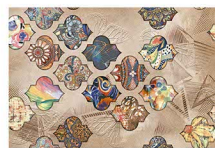


13025 - DK



13026 - LT

Random



13026 - HL - 1



13026 - DK

Random



HD



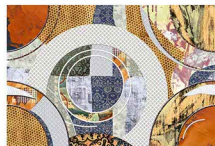
ran.com

mlexport.com

Design in Display : 13027



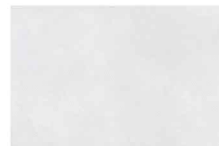
13027 - HL - 1A



13027 - HL - 1B



13027 - DK



13027 - LT



HD



an
am

mlexport.com

Design in Display : 13028



13028 - LT



13028 - HL - 2 A



13028 - HL - 1



13028 - HL - 2 B



13028 - DK



13028 - LT





HD



ranam

mlexport.com

Design in Display : 13029



13029 - HL - 1 A



13029 - HL - 1 B



13029 - LT





HD



ram
lam

mlexport.com



13030 - HL - 2



13031 - LT



13032 - LT



13030 - HL - 1



13031 - HL - 1



13032 - HL - 1



13032 - HL - 2



13030 - LT



13031 - DK



13032 - DK



HD



random

mlexport.com

Design in Display : 13033



13033 - HL - 1

Random



13033 - DK

Random



13033 - LT

Random



HD



ranam

mlexport.com

Design in Display : 13034



13034 - LT



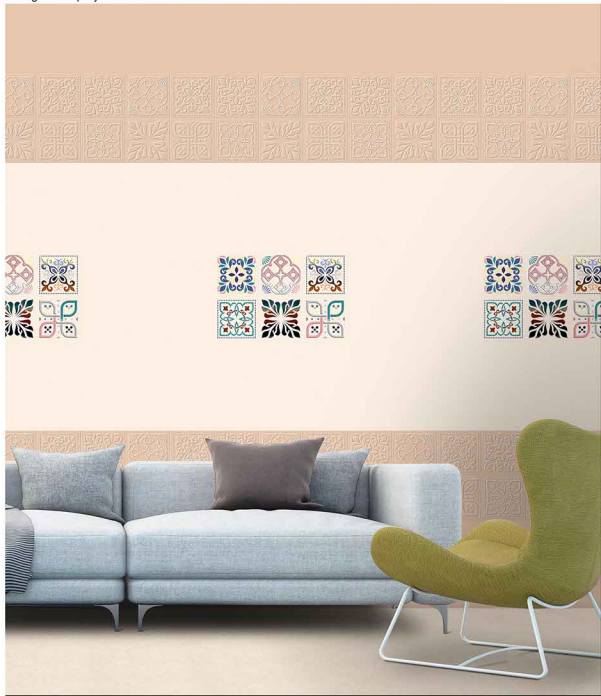
13034 - HL - 1



13034 - HL - 2



13034 - DK



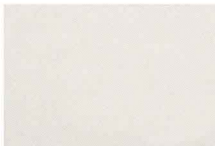


HD

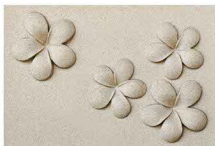


ran
lam

mlexport.com



13035 - LT



13035 - HL - 1



13035 - HL - 2



13035 - DK



13036 - LT

Random



13036 - HL - 1



13036 - HL - 2



13036 - DK

Random



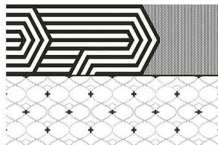
HD



fan
lam

mlexport.com

Design in Display : 13037



13037 - HL - 2



13037 - LT



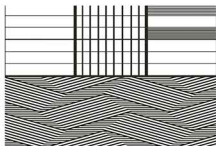
13037 - HL - 1



13037 - HL - 4

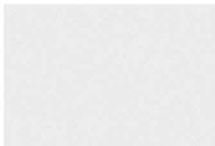


13037 - LT



13037 - HL - 3





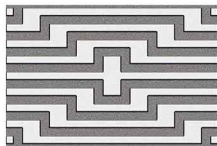
13038 - LT



13038 - HL - 1



13038 - DK



13038 - HL - 3



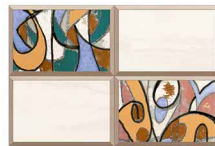
13038 - HL - 2



13039 - LT



13039 - HL - 1



13039 - HL - 2



13039 - DK



HD



ran
em

mlexport.com

Design in Display : 13040



13040 - HL - 1 A



13040 - HL - 1 B



13040 - DK



13040 - LT



HD



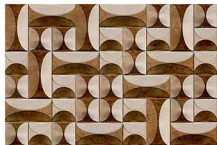
ranam

mlexport.com

Design in Display : 13041



13041 - LT



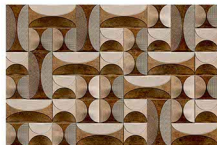
13041 - HL - 1



13041 - HL - 3



13041 - DK



13041 - HL - 2





HD



random

mlexport.com



13042 - HL - 1A



13042 - HL - 1B



13042 - LT



13042 - HL - 2



13043 - LT



13043 - HL - 1



13043 - LT



13044 - LT

Random



13044 - HL - 1



13044 - DK

Random



HD



ranam

mlexport.com

Design in Display : 13045



13045 - LT



13045 - HL - 1



13045 - HL - 2



13045 - DK



HD



ran
lam

mlexport.com

Design in Display : 13047



13046 - LT



13047 - LT



13046 - HL - 1



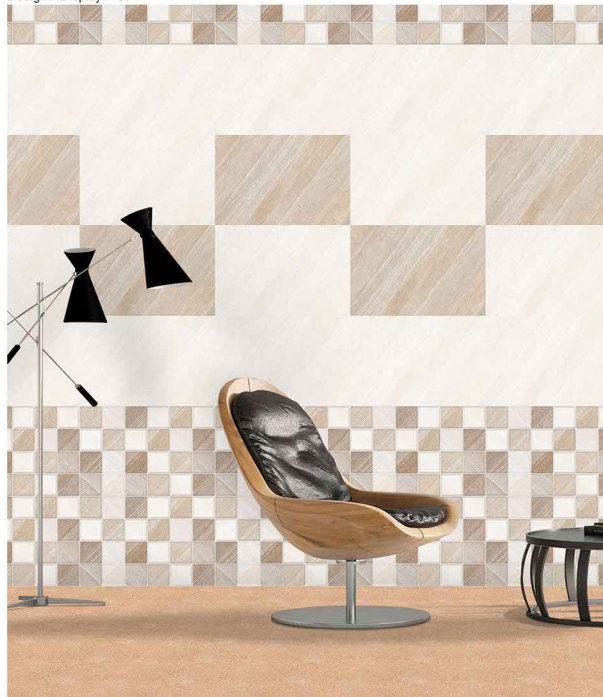
13047 - HL - 1



13046 - DK



13047 - DK





HD



fan
em

mlexport.com



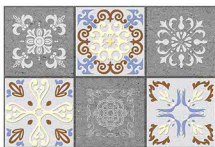
13048 - LT



13049 - LT



13050 - LT



13048 - HL - 1



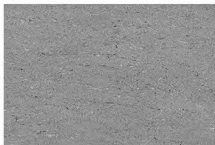
13049 - HL - 1



13050 - HL - 1



13050 - HL - 1



13048 - DK



13049 - DK



13050 - DK



HD



random

mlexport.com

Design in Display : 13052



13051 - LT

Random



13052 - LT



13051 - HL - 1



13052 - HL - 1



13051 - LT

Random



13052 - DK



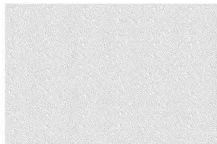
HD



ran
lam

mlexport.com

Design in Display : 13053



13053 - LT



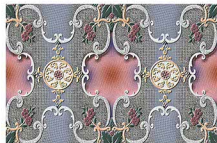
13053 - HL - 1



13053 - HL - 3



13053 - DK



13053 - HL - 2





HD

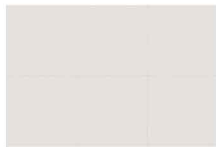


ran
em

mlexport.com



13054 - LT



13055 - LT



13056 - LT



13054 - HL - 1



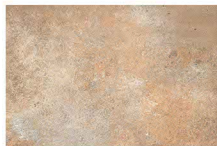
13055 - HL - 1



13056 - HL - 1



13056 - HL - 2



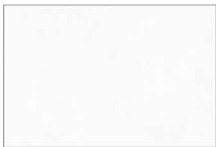
13054 - DK



13055 - LT



13056 - DK



13057 - LT



13057 - HL - 4



13057 - LT



13058 - LT



13057 - HL - 1



13057 - HL - 3



13057 - HL - 5



13058 - HL - 1

Random



13057 - DK



13057 - HL - 2



13057 - DK



13058 - DK



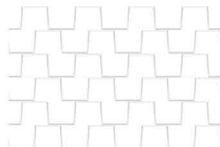
HD



rAn
lam

mlexport.com

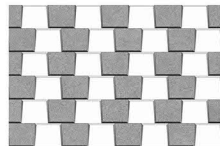
Design in Display : 13060



13059 - LT



13060 - LT



13059 - HL - 1



13060 - HL - 1



13059 - DK



13060 - DK



HD



ran
lam

mlexport.com

Design in Display : 13061



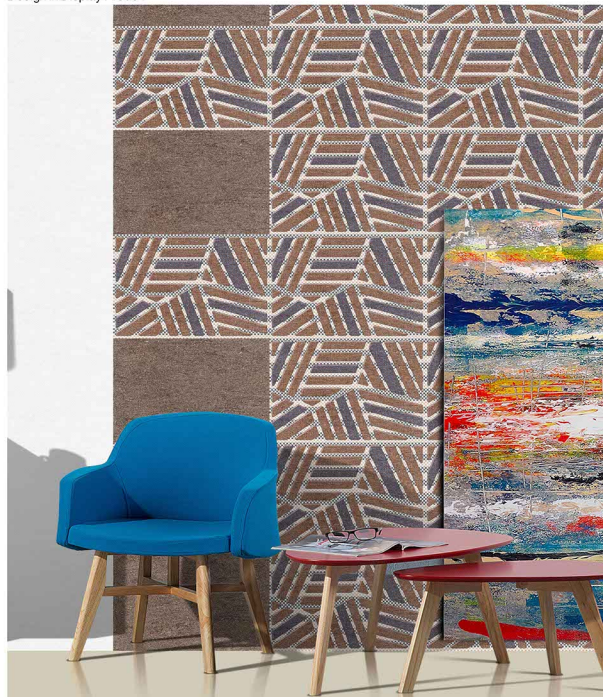
13061 - HL - 1



13061 - DK



13061 - LT





HD



gran

mlexport.com



13062 - LT



13062 - HL - 1



13062 - HL - 2



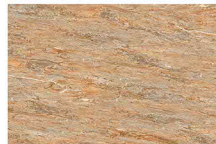
13062 - DK



13063 - LT



13063 - HL - 1



13063 - DK



13064 - DK



13064 - HL - 1



13064 - DK



HD



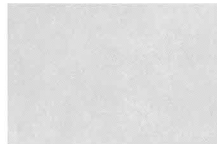
fan

mlexport.com

Design in Display : 13065



13065 - LT



13066 - LT



13065 - HL - 1



13066 - HL - 1



13065 - LT



13066 - DK



HD



ranam

mlexport.com

Design in Display : 13067



13067 - LT



13068 - LT



13067 - HL - 1



13068 - HL - 1



13067 - DK



13068 - DK





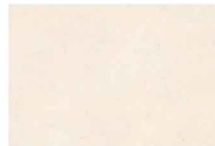
13069 - LT



13070 - HL - 1 A



13070 - HL - 1 B



13070 - LT



13069 - HL - 1



13070 - HL - 1 C



13070 - HL - 1 D



13070 - HL - 2



13069 - DK



13070 - DK



13070 - DK



13070 - DK



HD



fan
m

mlexport.com

Design in Display : 13071



13071 - LT



13072 - LT



13071 - HL - 1



13072 - HL - 1



13071 - DK



13072 - DK



HD



fan
lam

mlexport.com

Design in Display : 13073



13073 - LT



13074 - LT



13073 - HL - 1



13074 - HL - 1



13073 - DK



13074 - DK





HD

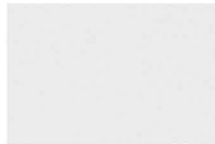


fan
lam

Design in Display : 13076



mlexport.com



13075 - LT



13076 - LT



13075 - HL - 1



13076 - HL - 1



13075 - DK



13076 - DK

mlplexport.com

